



COLOUR TRENDS PORTFOLIO

WELCOME TO THE CHURCHILL COLOUR PORTFOLIO,

where we offer inspiration on combining colours and textures to create striking tabletop looks, in line with the latest trends in hospitality interior design. Use this tool to explore muted, complementary tones or bold colour clashes, finding ideas to help create your unique tableware style.



BACK TO THE FUTURE

Explore the Back to the Future trend for inspiration around colour palettes inspired by the past, from retro pastels to mid-century chic.



NATURAL RE-GEN

Discover the tones and textures of nature, including the fresh greens so synonymous with the natural world or the deeply saturated hues found in the landscape.



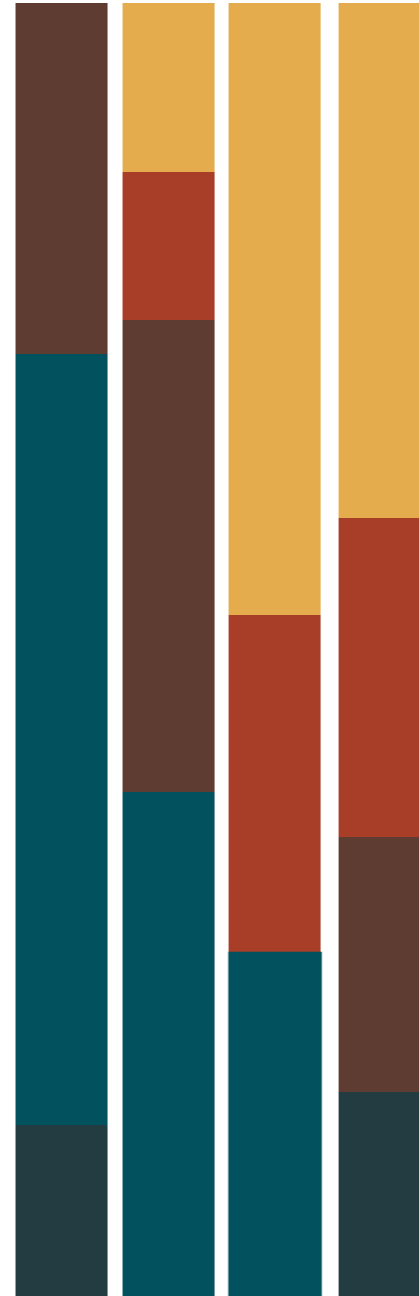
WELL- SPACE

Draw inspiration from the calming tones of the Well-Space trend, like soft neutral taupe tones or the blush beiges of bohemian designs.

BACK TO THE FUTURE

Designers continue to draw inspiration from the mid-century era, including the abstract forms and warm colour palettes of the 1960's and 1970's.

Wood panelling and tactile materials such as velvet and leather are increasingly paired with elements inspired by the space-age era such as spherical shapes and curved lines. Combine the warm tones of Stonecast Mustard Seed, Patina Rust Red and Vintage Copper with deep Patina Teal. Enhance the mid-century feel with earthy browns in Stonecast Raw and Studio Prints Stone.



Combine dusky teals and blues with earthy browns, alternatively add warmth to the palette with burnt sienna tones and mustards.



STONECAST
Mustard Seed



STONECAST PATINA
Rust Red



STONECAST RAW
Brown



STUDIO PRINTS STONE
Zircon Brown



STONECAST PATINA
Rustic Teal



EMERGE
Cinnamon Brown



BACK TO THE FUTURE

As AI revolutionises all industries and space tourism becomes a reality, designers are re-visualising the future, taking inspiration from the past and how the age of today was imagined in the futuristic illustrations of the 1950s and 1960s.

The result is a playful revival of abstract space age design, with bold and empowering colour palettes. Mix the dark tones of Patina Cobalt and Deep Purple with Raku Quartz Pink and Stonecast Lavender to create a cosmic palette. Add a pop of warmth with Stonecast Mustard Seed, a perfect retro shade for the trend Back to the Future.



For a cosmic palette use deep purples and rich pinks. Brighten up the futuristic look with fun pops of orange and yellow.



STONECAST Mustard Seed



STUDIO PRINTS ASTRO Blue



STONECAST Blueberry



STUDIO PRINTS RAKU Rose Quartz Pink



STONECAST Lavender



STONECAST PATINA Deep Purple



Tide Black



NATURAL RE-GEN

Designers create spaces that reconnect consumers with the natural world, feeding the desire to live with intent and consume consciously to protect planet.

Circular thinking means we're seeing more regenerative or salvaged materials, as well as natural colour palettes intended to be long-lasting and trans-seasonal. Fresh ingredients look great on tableware that emulates the natural world, and green is now a hugely popular tableware choice. Get the look by pairing the greens in Stonecast and Patina with off whites and organic textures like Studio Prints Stone.



STONECAST
Sorrel Green



STONECAST RAW
Green



STUDIO PRINTS KINTSUGI
Agate Grey



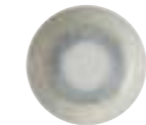
STONECAST
Green



STONECAST PLUME
Olive



STONECAST PATINA
Antique Taupe



STUDIO PRINTS FUSION
Agate Grey

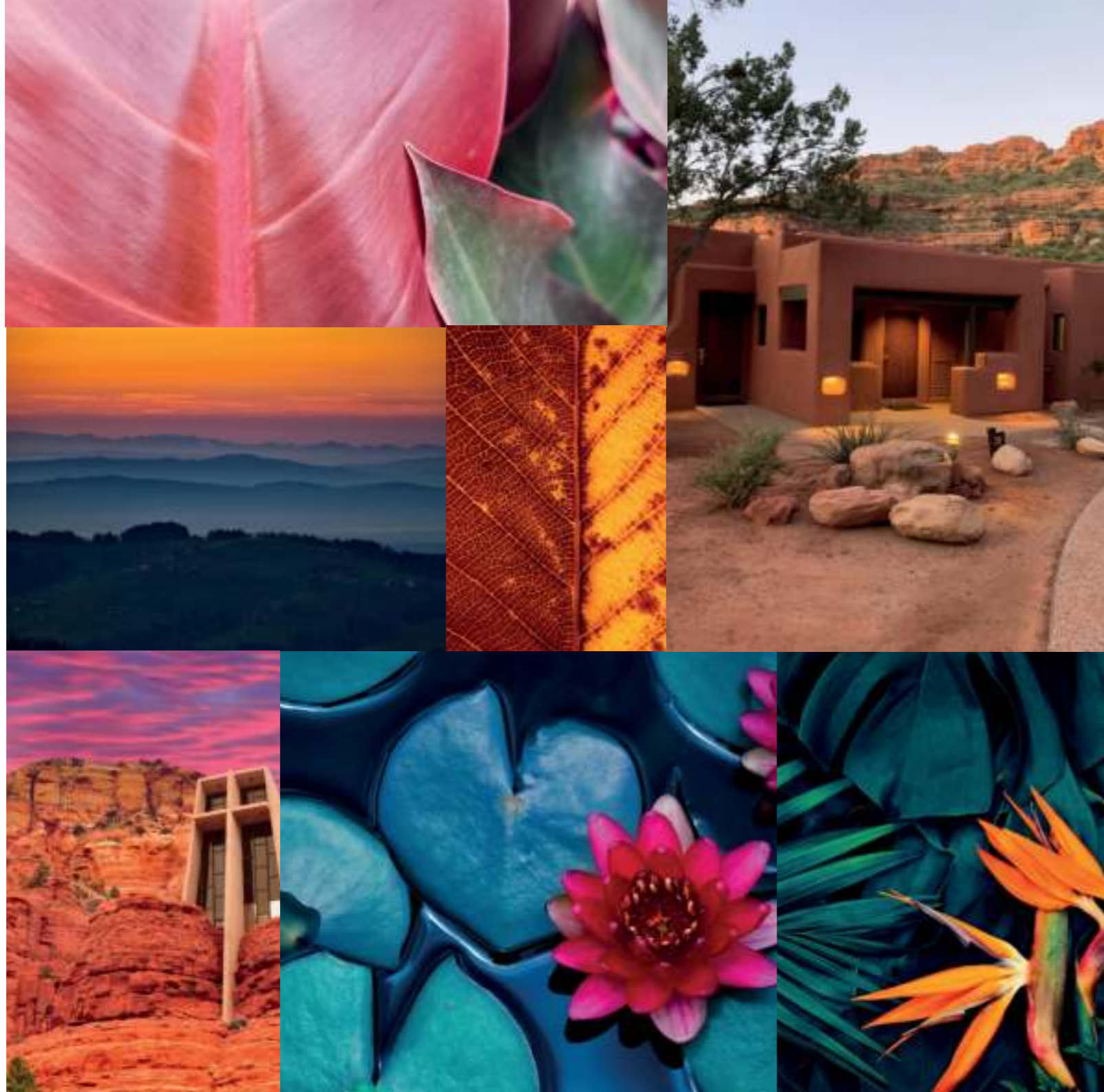
Deeply saturated green tones create the rich feel of a dense forest, alternatively use lighter greens paired with taupes and creams for a fresher look.



NATURAL RE-GEN

As designers draw inspiration from nature they're becoming bolder with colour, using the deeply saturated tones found in exotic or barren landscapes.

Spaces also become more immersive, surrounding the consumer with the natural world and blurring the lines between inside and outside. Find deep natural tones in Patina, such as Rust Red and Rustic Teal or the striking Chroma Marine. Pair these cooler strong tones with warm Stonecast Spiced Orange, or to create a exotic botanical vibe introduce the pinks of Stonecast and Raku.



STUDIO PRINTS HOMEPSUN CHROMA
Marine



STUDIO PRINTS RAKU
Rose Quartz Pink



STONECAST PATINA
Rust Red



STONECAST PATINA
Rustic Teal



STONECAST
Spiced Orange



STONECAST
Petal Pink

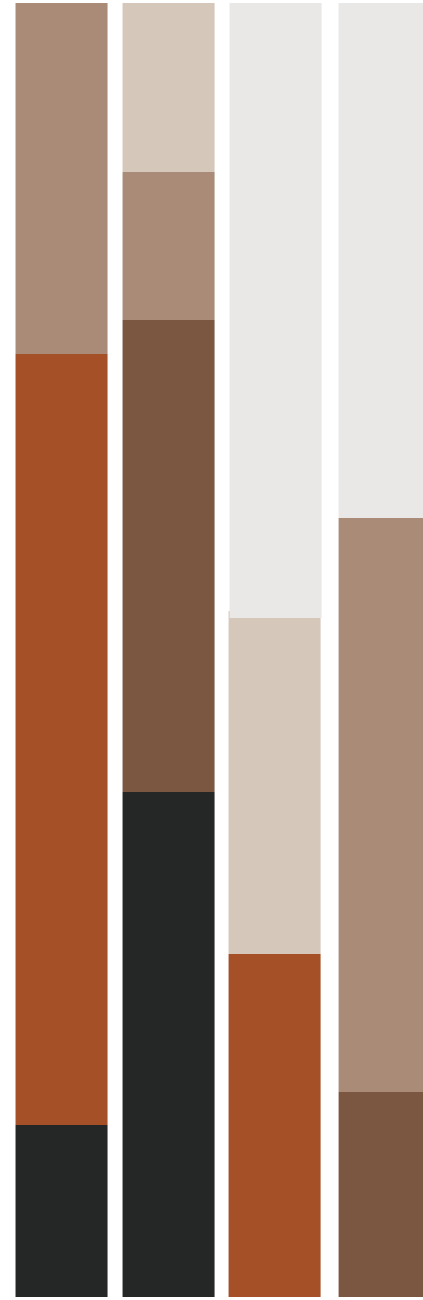
Use deeply saturated teals and blues to create a tropical palette. Introduce a botanical vibe with pops of rich reds, pinks and oranges.



WELL-SPACE

Interior design of both hospitality, home and work places has the ability to bring comfort and equilibrium during times of change or turbulence.

Designers are creating spaces focused on wellness and low stimulation, areas with unintrusive energy where consumers can make meaningful connections. Soft and neutral colour palettes, raw materials and natural light adorn hybrid spaces intended for work, rest or socialising. Create a neutral mix of off whites with Patina Antique Taupe, and Agate Grey in Studio Print designs. Add warmth to the palette with deep browns from Studio Prints Stone and Emerge.



STUDIO PRINTS KINTSUGI
Agate Grey



STUDIO PRINTS FUSION
Agate Grey



STONECAST RAW
Brown



STONECAST RAW
Terracotta



EMERGE
Cinnamon Brown



ELEMENTS
Dune

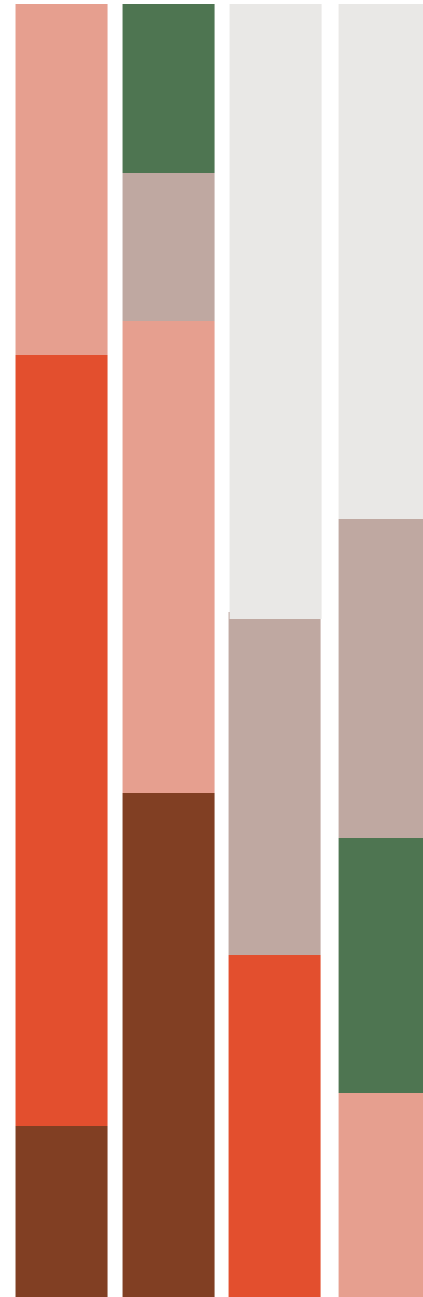
Create a cosy space with warm neutrals like browns and terracottas. Introduce lighter taupes and creams for a more tranquil vibe.



WELL-SPACE

Bohemian interior design embodies the trend for wellness, creating relaxed spaces that celebrate free-spirited lifestyles, wanderlust and creative expression.

Layers of texture, pattern and colour, paired with global influences create relaxed and comforting vibes. While the incorporation of greenery and natural light reduces stress, positively affects mood and improves air quality. Use warm neutrals for a perfect Boho palette, like Patina Terracotta and Raku Agate Grey. Mix in earthy tones like Raw Brown and Patina Antique Taupe, add a splash of natural freshness with Stonecast Sage Green.



-  **STONECAST RAW**
Brown
-  **STONECAST**
Spiced Orange
-  **STONECAST CANVAS**
Coral
-  **STONECAST**
Sage Green
-  **STONECAST CANVAS**
Natural
-  **STONECAST RAW**
Terracotta
-  **STONECAST PATINA**
Antique Taupe

Combine browns and blush tones for a laid back boho look, introduce pops of green to create that link with the natural world.





CHURCHILL®