

**sambonet**<sup>®</sup>

Arthur Krupp

**RADICI**

BUFFET SYSTEM

CATALOGUE







# RADICI

## BUFFET SYSTEM

**CUSTOM IT, STYLE IT, LIVE IT.**

**A stylish buffet entirely open to customization, where each service can stand out featuring its own style and function.**

**Entirely developed and designed in Italy, Radici is featured by a unique, functional concept combining superior design, full modularity and versatility of style.**

Un buffet elegante interamente aperto alla personalizzazione, dove ogni servizio può essere fatto proprio nello stile e nella funzione. Distinguendosi. Interamente sviluppato e progettato in Italia, Radici unisce un design superiore a un concept funzionale che fa - della modularità e della differenziazione stilistica - i suoi veri punti di forza nonché il proprio carattere distintivo.

**sambonet®**

Arthur Krupp

**Sambonet and Arthur Krupp buffet has the intent to fill the aesthetic gap with a complete system to host at best your guests.**

Il buffet Sambonet e Arthur Krupp vuole rispondere a un'esigenza estetica mai soddisfatta, con un sistema completo per accogliere al meglio i propri ospiti.

**Superior Design & Quality**  
within Sambonet DNA.

Design e Qualità superiori,  
come nel DNA Sambonet.

**Customizable Style** through different colors, shapes and materials.

Stile completamente personalizzabile, grazie alla varietà di colori, forme e materiali.

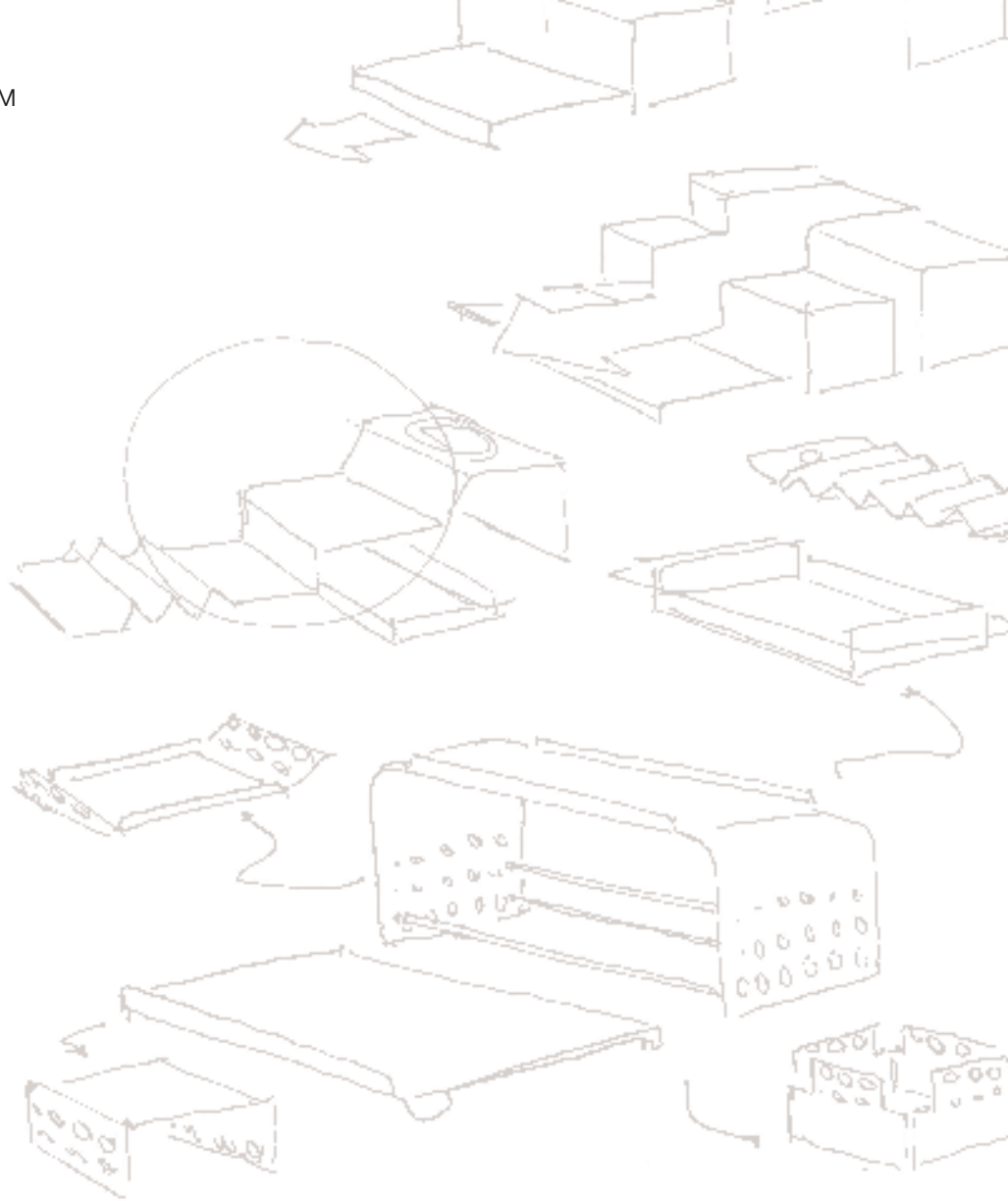
**Modular & Adaptable** to your specific needs of menu, space and display.

Sistema modulare e adattabile ad ogni esigenza di menu, spazio ed esposizione.

**Cutting-Edge Production Technologies:** laser and water cutting, folding machine and much more.

Tecnologie di ultima generazione: taglio laser e ad acqua, macchine piegatrici e molto altro.





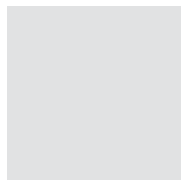
# Materials

## Structure

### S.Steel



Black

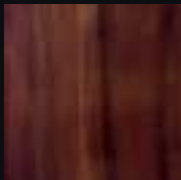


Grey

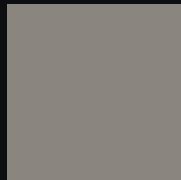
# Materials

## Complements

### Wood



Acacia  
Wood



Laquered  
Wood

### Stoneware Tiles

Decor A



Marmoreal  
White

Decor B



Marmoreal  
Blue

Decor C

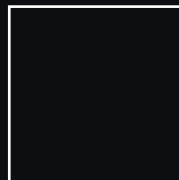


Marmoreal  
Green

### Polyrattan



### Steel Oxidized



Black

# Custom it

*Radici*: a fully customizable and modular system.

Chose the items you need, the material which fits better for your location and campose your bufet according to your functional requirements.

## Display

Gastronorm sizes

1/1

1/2

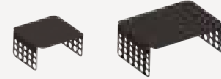
2/4

2/1

Other sizes

Materials

STANDS



S/S Black  
S/S Grey



REMOVABLE SHELVES



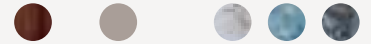
S/S Black  
S/S Grey



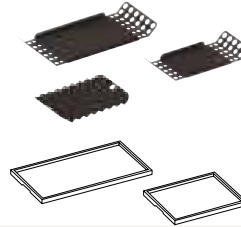
STANDS SHELVES



Acacia Wood  
Laquered Wood  
Stoneware Marmoreal  
White / Blue / Green



TRAYS



S/S Black  
S/S Grey



Acacia Wood  
Laquered Wood  
Polyrattan

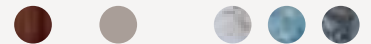


TRAY INSERT

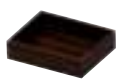


ONLY AVAILABLE IN WOOD

Acacia Wood  
Laquered Wood  
Stoneware Marmoreal  
White / Blue / Green



BOXES



Acacia Wood  
Laquered Wood  
Polyrattan



CUTTING BOARDS



Acacia Wood



TOWERS



S/S Black  
S/S Grey



TOWERS SHELVES



Acacia Wood





*Radici*: un sistema interamente customizzabile e modulare. Scegli gli articoli di cui hai più bisogno, il materiale che più si adatta alla tua location e componi il tuo buffet in base alle tue esigenze funzionali.

### Hot Beverage

Coffee Dispenser



6 lt 202<sup>7</sup>/<sub>8</sub> oz.    9 lt 304<sup>3</sup>/<sub>8</sub> oz.    12 lt 405<sup>3</sup>/<sub>8</sub> oz.

S/S Black    S/S Grey  
●    ●

### Hot Food

Heated showcase

1 / 1



Chafing dish round



30cm 11<sup>3</sup>/<sub>4</sub> in.    36cm 14<sup>1</sup>/<sub>8</sub> in.    40cm 15<sup>3</sup>/<sub>4</sub> in.

S/S Black    S/S Grey  
●    ●

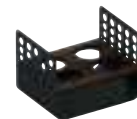
### Cold Beverage

2 Juice pitchers bar



S/S Black    S/S Grey  
●    ●

4 Juice pitchers bar



S/S Black    S/S Grey  
●    ●

Juice dispenser



Acacia Wood    Laquered Wood  
●    ●

### Cold Food

Gastronorm size

1 / 1

1 / 2

2 / 4



Cooled showcase



Refrigerated display



Cooled showcase

S/S Black    S/S Grey  
●    ●

### Napkin holder



### Label holder



**wide range of accessories**

*(see product details p. 37)*

## Style it

Express your style!

Radici is a unique buffet system that adapts to every location, from the most contemporary to the most luxurious.

# Jungle





Esprimi il tuo stile!

Radici è un sistema di buffet unico che si adatta perfettamente ad ogni location, dalle più contemporanee alle più lussuose.

# Contemporary





# Design





# Luxury

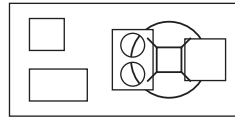


**Check our catalog  
to match Radici  
with other Sambonet items.**

Consulta il nostro catalogo  
per abbinare a Radici altri articoli  
della gamma Sambonet.

# Live it

Set up your buffet based on the space you want to allocate and the food you want to offer to your guests.

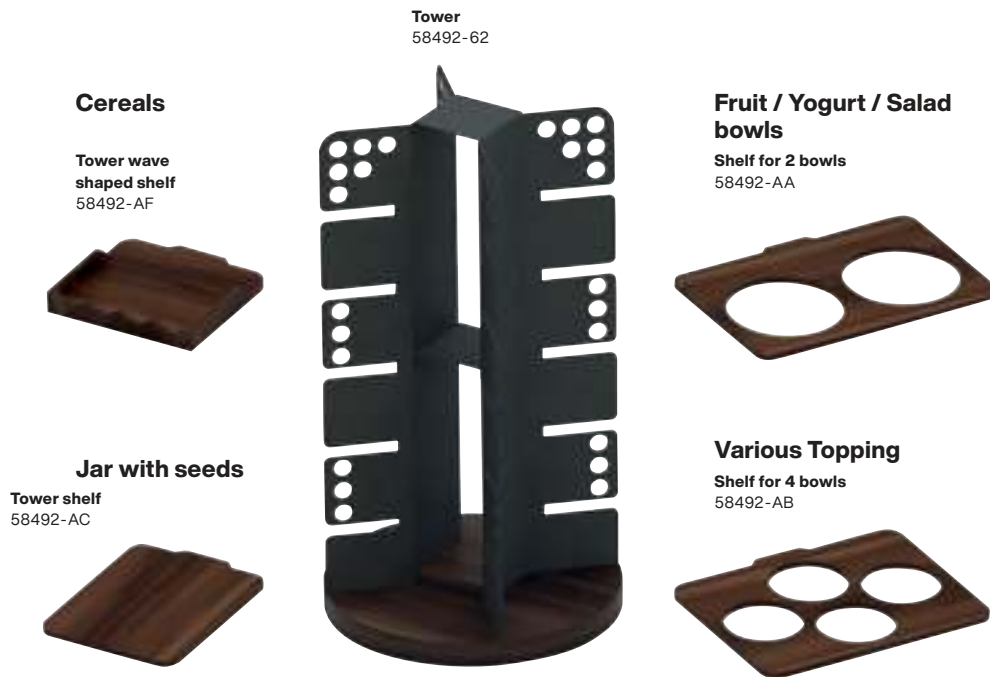


Organizza il tuo buffet in base allo spazio a disposizione e al cibo che vuoi offrire ai tuoi ospiti.

## Small Spaces Tower

Width 1 m — 39<sup>3</sup>/<sub>8</sub> in.

Height 0,7 m - 27<sup>1</sup>/<sub>2</sub> in.



## Accessories

### Cold Beverage

4 - Cereal/Juice pitcher Bar  
58499-04



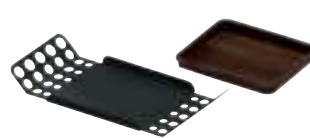
### Butter

2 - Cereal/Juice pitcher Bar  
58499-02



### Tableware

Small tray  
58491-01



Insert for small tray  
58491-AA

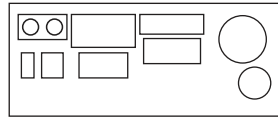


Label holder  
58493-09



Napkin holder  
58495-01





# Small Spaces Modular stands

Width 1,60 m — 63 in.

## Croissant / Muffin

Removable shelf GN 1/1  
58490-01

Stand GN 2/4  
58494-02

Stand GN 1/1  
58494-01



## Cakes

Stand  
58494-04

Stand  
58494-05



## Breadsticks / Bread

Removable shelf GN 1/2  
58490-02

Stand GN 1/2  
58494-03

Box  
68216-01

Box  
68216-02

Bread cutting board  
68217-32



Height 0,35 m - 13¾ in.

## Accessories

### Stoneware Tiles

Insert for stand GN 1/1 — GN 1/2 — GN 2/4

Decor A



Decor B



Decor C



Stand shelf GN 1/1  
58494-PC Decor A  
58494-PH Decor B  
58494-PM Decor C

Stand shelf GN 2/4  
58494-PD Decor A  
58494-PI Decor B  
58494-PN Decor C

### Laquered Wood

Insert for stand GN 1/1 — GN 2/4

Stand shelf GN 1/1  
58494YAA

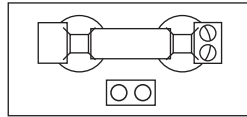


Stand shelf GN 2/4  
58494YAC



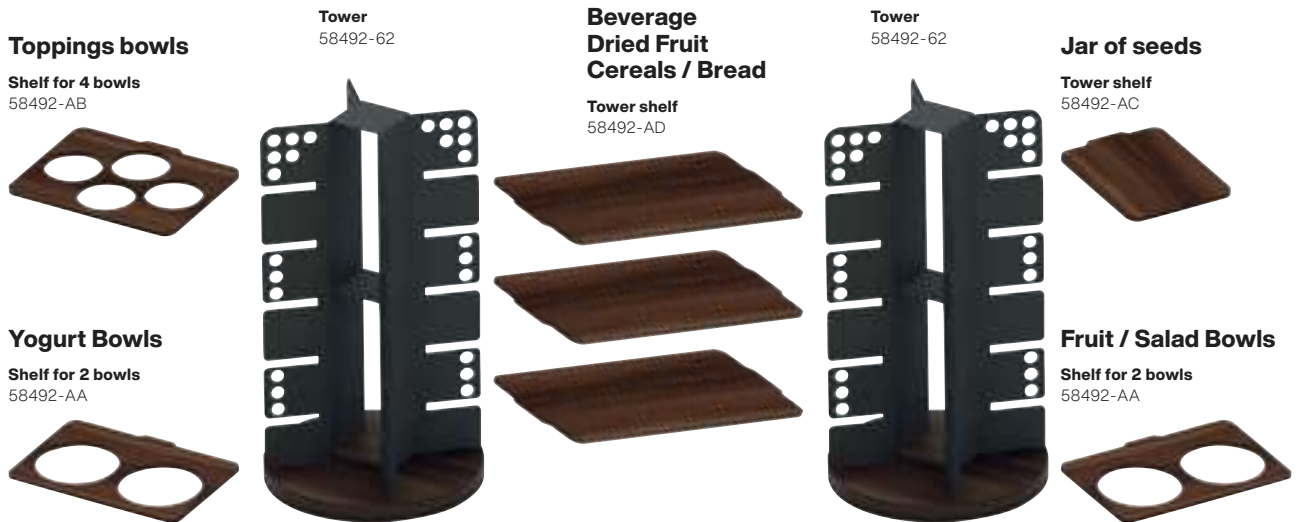
Tray GN 1/1  
58494YAB





# Large Spaces Tower

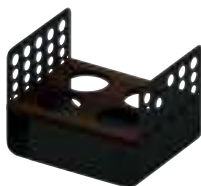
Width 1,50 m — 59 in.



## Accessories

### Cold Beverage

4 - Cereal/Juice pitcher Bar  
58499-04



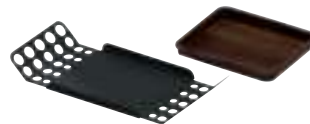
### Butter

2 - Cereal/Juice pitcher Bar  
58499-02



### Tableware

Small tray  
58491-01



Insert for small tray  
58491-AA



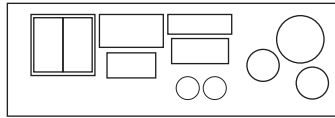
Label holder  
58493-09



Napkin holder  
58495-01







# Large Spaces Modular stands

Width 2 m — 78¾ in.

## Croissant / Muffin

Removable shelf GN 1/1  
58490-01

Stand GN 2/4  
58494-02

Stand GN 1/1  
58494-01



## Cakes

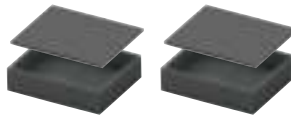
Stand  
58494Y08 / 58494Y09 / 58494Y10



## Breadsticks / Bread

Stand GN 2/1  
58494-06

Box with lid  
58497Y05



Height 0,30 m — 11¾ in.

## Accessories

### Stoneware Tiles

Insert for stand GN 1/1 — GN 1/2 — GN 2/4

Decor A



Decor B



Decor C



Stand shelf GN 1/1  
58494-PC Decor A  
58494-PH Decor B  
58494-PM Decor C

Stand shelf GN 2/4  
58494-PD Decor A  
58494-PI Decor B  
58494-PN Decor C

### Wood

Insert for stand GN 1/1 — GN 2/4

Stand shelf GN 1/1  
58494-AA



Stand shelf GN 2/4  
58494-AC



Tray GN 1/1  
58494-AB



## One collection, unlimited combinations

Radici is a modular system, 100% customizable to your functional needs. Watch our 3D video to live the experience of its limitless options.

Una collezione, infinite combinazioni.  
Radici è un sistema modulare, 100% personalizzabile alle tue esigenze funzionali. Guarda il video 3D per scoprire da vicino le sue infinite combinazioni.



SCAN ME

## How Radici was born?

**“While visiting hotels around the world, I have noticed a change in hospitality habits: new corners were set up to accommodate guests throughout the day. Radici was born precisely to allow settings and layouts of all sizes and styles, depending on the needs of each facility.”**

Com'è nato Radici?

“Durante le mie visite agli hotel in giro per il mondo, ho notato un cambio nelle modalità di accoglienza, con nuovi angoli creati per ospitare i clienti nel corso della giornata. Radici nasce proprio per permettere di creare ambientazioni e allestimenti di ogni dimensione e stile, a seconda delle esigenze di ogni struttura. “



Paola Longoni  
*Creative Director*

[Watch now](#)



SCAN ME







Arthur Krupp

sambonet





## Give an industrial touch with Sambonet stainless steel elements , 100% Made in Italy.

Aggiungi un tocco industrial con le strutture in acciaio inox Sambonet, 100% Made in Italy.



















## Choose the best finishes and materials to match your style and needs.

Scegli materiali e finiture più adatte al tuo stile e alle tue esigenze.













**Wood, polyrattan and steel from Arthur Krupp collection, are versatile and complementary to each other.**

Legno, polyrattan e acciaio della collezione Arthur Krupp sono versatili e complementari.















**Thanks to Radici versatility, the buffet becomes a stage to create new corners and inspirations for every hotel and restaurant.**

Grazie alla versatilità di Radici, il buffet diventa un palcoscenico per creare nuovi allestimenti e ispirazioni per ogni hotel e ristorante.









## **Product details**





SS

**Tower**  
Colonna verticale  
Säule  
Colonne  
Torreta

art.	dim. cm.	h. cm.	col.
58492-42	34x33	42	●
58492Y42	34x33	42	●



SS

**Tower**  
Colonna verticale  
Säule  
Colonne  
Torreta

art.	dim. cm.	h. cm.	col.
58492-62	34x33	62	●
58492Y62	34x33	62	●



**Shelf for 2 bowls**  
Pianetto per 2 coppe  
Regal Für 2 Schalen  
Étagère pour 2 bols  
Estante para 2 copas

art.	dim. cm.
58492-AA	52x34,9

Acacia wood. – Legno di acacia.



**Shelf for 4 bowls**  
Pianetto per 4 coppe  
Regal Für 4 Schalen  
Étagère pour 4 bols  
Estante para 4 copas

art.	dim. cm.
58492-AB	44,3x34,9

Acacia wood. – Legno di acacia.



**Tower shelf**  
Ripiano colonna  
Regal für Säule  
Étagère Colonne  
Estante Torreta

art.	dim. cm.
58492-AC	27x34,9

Acacia wood. – Legno di acacia.





**Tower shelf**

Ripiano colonna  
Regal für Säule  
Etagère Colonne  
Estante Torreta

art. dim. cm.

58492-AD 87,6x35

Acacia wood. – Legno di acacia.



**Tower shelf**

Ripiano colonna  
Regal für Säule  
Etagère Colonne  
Estante Torreta

art. dim. cm.

58492-AE 52x34,9

Acacia wood. – Legno di acacia.



**Tower wave-shaped shelf**

Ripiano colonna sagomato  
Wellenförmige Regal Säule  
Etagère ondulé colonne  
Estante ondulado torreta

art. dim. cm.

58492-AF 27x26,4

Acacia wood. – Legno di acacia.



SS

**Stand**

Alzata  
Ständer  
Etagère  
Soporte

art. GN dim. cm. h. cm. col.

58494-01 1/1 62,3x33,3 26,5 ●

58494Y01 1/1 62,3x33,3 26,5 ●



SS

**Removable shelf**

Piano mobile  
Regal Abnehmbar  
Etagère amovible  
Estante extraible

art. GN dim. cm. col.

58490-01 1/1 61,5x33,2 ●

58490Y01 1/1 61,5x33,2 ●





**Stand shelf**  
Ripiano alzata  
Regalständer  
Insert étagère  
Estante soportte

art. GN dim. cm.  
58494-AA 1/1 55x33,3

**Acacia wood.** – Legno di acacia.



**Stand shelf**  
Ripiano alzata  
Regalständer  
Insert étagère  
Estante soportte

art. GN dim. cm.  
58494YAA 1/1 55x33,3

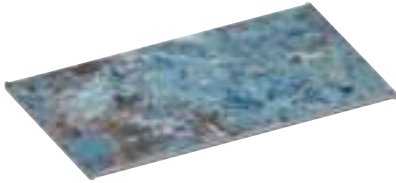
**Lacquered wood.** – Legno laccato.



**Stand shelf**  
Ripiano alzata  
Regalständer  
Insert étagère  
Estante soportte

art. GN dim. cm.  
58494-PC 1/1 52,5x32

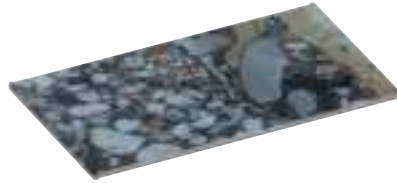
**Gres - Marmoreal White.**



**Stand shelf**  
Ripiano alzata  
Regalständer  
Insert étagère  
Estante soportte

art. GN dim. cm.  
58494-PH 1/1 52,5x32

**Gres - Marmoreal Blue.**



**Stand shelf**  
Ripiano alzata  
Regalständer  
Insert étagère  
Estante soportte

art. GN dim. cm.  
58494-PM 1/1 52,5x32

**Gres - Marmoreal Green.**



**Tray**  
Vassoio  
Tablett  
Plateau  
Bandeja

art. dim. cm. h. cm.  
58494-AB 61x32,7 3,3

**Acacia wood.** – Legno di acacia.



**Tray**  
Vassoio  
Tablett  
Plateau  
Bandeja

art. dim. cm. h. cm.  
58494YAB 61x32,7 3,3

**Lacquered wood.** – Legno laccato.



**Container with lid**  
Contentitore con coperchio  
Behälter Mit Deckel  
Conteneur avec couvercle  
Contenedor con tapa

art. GN dim. cm. h. cm.  
58497Y06 1/1 53x32,5 9

**Lacquered wood.** – Legno laccato.



**Stand**  
Alzata  
Ständer  
Etagère  
Soportte

art.	GN	dim. cm.	h. cm.	col.
58494-02	2/4	62,3x17	16,5	●
58494Y02	2/4	62,3x17	16,5	●





**Stand shelf**  
Ripiano alzata  
Regalständer  
Insert étagère  
Estante soporté

art. GN dim. cm.  
58494-AC 2/4 55x17

**Acacia wood.** – Legno di acacia.



**Stand shelf**  
Ripiano alzata  
Regalständer  
Insert étagère  
Estante soporté

art. GN dim. cm.  
58494YAC 2/4 55x17

**Lacquered wood.** – Legno laccato.



**Stand shelf**  
Ripiano alzata  
Regalständer  
Insert étagère  
Estante soporté

art. GN dim. cm.  
58494-PD 2/4 55x17

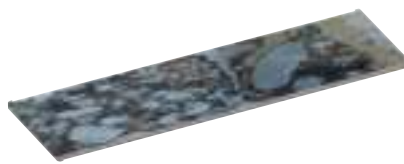
**Gres - Marmoreal White.**



**Stand shelf**  
Ripiano alzata  
Regalständer  
Insert étagère  
Estante soporté

art. GN dim. cm.  
58494-PI 2/4 55x17

**Gres - Marmoreal Blue.**



**Stand shelf**  
Ripiano alzata  
Regalständer  
Insert étagère  
Estante soporté

art. GN dim. cm.  
58494-PN 2/4 55x17

**Gres - Marmoreal Green.**



SS

**Stand**  
Alzata  
Ständer  
Étagère  
Soporté

art.	GN	dim. cm.	h. cm.	col.
58494-03	1/2	42,3x27,3	26,5	●
58494Y03	1/2	42,3x27,3	26,5	●



SS

**Removable shelf**  
Piano mobile  
Regal Abnehmbar  
Étagère amovible  
Estante extraíble

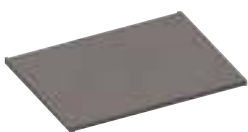
art.	GN	dim. cm.	col.
58490-02	1/2	41,5x27,2	●
58490Y02	1/2	41,5x27,2	●



**Stand shelf**  
Ripiano alzata  
Regalständer  
Insert étagère  
Estante soporté

art. GN dim. cm.  
58494-AD 1/2 34,5x27,3

**Acacia wood.** – Legno di acacia.



**Stand shelf**  
Ripiano alzata  
Regalständer  
Insert étagère  
Estante soporté

art. GN dim. cm.  
58494YAD 1/2 34,5x27,3

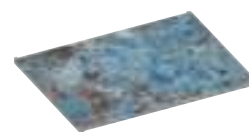
**Lacquered wood.** – Legno laccato.



**Stand shelf**  
Ripiano alzata  
Regalständer  
Insert étagère  
Estante soporté

art. GN dim. cm.  
58494-PE 1/2 34,5x27,3

**Gres - Marmoreal White.**



**Stand shelf**  
Ripiano alzata  
Regalständer  
Insert étagère  
Estante soporté

art. GN dim. cm.  
58494-PJ 1/2 34,5x27,3

**Gres - Marmoreal Blue.**





**Stand shelf**  
Ripiano alzata  
Regalständer  
Insert étagère  
Estante soporte

art. GN dim. cm.  
58494-PO 1/2 34,5x27,3

**Gres - Marmoreal Green.**



**Tray**  
Vassoio  
Tablett  
Plateau  
Bandeja

art. GN dim. cm. h. cm.  
58494-AE 1/2 41x26,7 3,3

**Acacia wood. – Legno di acacia.**



**Tray**  
Vassoio  
Tablett  
Plateau  
Bandeja

art. GN dim. cm. h. cm.  
58494YAE 1/2 41x26,7 3,3

**Lacquered wood. – Legno laccato.**



**Container with lid**  
Contentore con coperchio  
Behälter Mit Deckel  
Conteneur avec couvercle  
Contenedor con tapa

art. GN dim. cm. h. cm.  
58497Y05 1/2 32,5x26,5 9

**Lacquered wood. – Legno laccato.**



**Container**  
Contentore  
Behälter  
Conteneur  
Contenedor

art. dim. cm. h.  
58497Y01 11x11 14  
58497Y02 11x11 14-8

**Lacquered wood. – Legno laccato.**



**Container**  
Contentore  
Behälter  
Conteneur  
Contenedor

art. dim. cm. h. cm.  
58497Y03 27x12 8  
58497Y04 27x21 8

**Lacquered wood. – Legno laccato.**





SS

**Stand**  
Alzata  
Ständer  
Etagère  
Soporte

art.	dim. cm.	h. cm.	col.
58494-04	20x18,6	10	●
58494Y04	20x18,6	10	●



SS

**Stand**  
Alzata  
Ständer  
Etagère  
Soporte

art.	dim. cm.	h. cm.	col.
58494-05	31x23	12	●
58494Y05	31x23	12	●



SS

**Stand Tilted**  
Alzata Inclinata  
Ständer Schräg  
Etagère Incliné  
Soporte Inclinado

art.	GN	dim. cm.	h. cm.	col.
58494-06	2/1	65,8x57,7	25,3	●
58494Y06	2/1	65,8x57,7	25,3	●



**Cake stand**  
Alzata torta  
Tortenständer  
Gueridon pâtissier  
Pedestal para tartas

art.	Ø cm.	h. cm.	fits/per
58494Y07	20	11	68250-16
58494Y08	25	11	68250-21
58494Y09	30	14	68250-26
58494Y10	35	14	68250-31

Lacquered wood. – Legno laccato.



SS

**Small tray**  
Vassoio piccolo  
Tablett Klein  
Plateau petit  
Bandeja pequeña

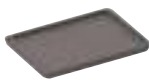
art.	dim. cm.	h. cm.	col.
58491-01	35,5x16	3,8	●
58491Y01	35,5x16	3,8	●



**Insert for small tray**  
Inserto per vassoio piccolo  
Tablett-Einsatz Klein  
Insert de plateau petit  
Inserto bandeja pequeña

art.	dim. cm.
58491-AA	19,8x16,2

Acacia wood. – Legno di acacia.



**Insert for small tray**  
Inserto per vassoio piccolo  
Tablett-Einsatz Klein  
Insert de plateau petit  
Inserto bandeja pequeña

art.	dim. cm.
58491YAA	19,8x16,2

Lacquered wood. – Legno laccato.



SS

**Large tray**  
Vassoio grande  
Tablett Groß  
Plateau large  
Bandeja grande

art.	dim. cm.	h. cm.	col.
58491-02	46,5x20,5	3,8	●
58491Y02	46,5x20,5	3,8	●



**Insert for large tray**  
Inserto per vassoio grande  
Tablett-Einsatz Groß  
Insert de plateau grand  
Inserto bandeja grande

art.	dim. cm.
58491-AB	31x20,7

Acacia wood. – Legno di acacia.







**Insert for large tray**  
 Inserto per vassoio grande  
 Tablett-Einsatz Groß  
 Insert de plateau grand  
 Inserto bandeja grande

art. dim. cm.  
 58491YAB 31x20,7

**Lacquered wood.** – Legno laccato.



SS

**Tray**  
 Vassoio  
 Tablett  
 Plateau  
 Bandeja

art.	GN	dim. cm.	h. cm.	col.
58491-05	1/2	41,3x27,2	6	●
58491Y05	1/2	41,3x27,2	6	●



**Tray insert**  
 Inserto vassoio  
 Tablett-Einsatz  
 Insert de plateau  
 Inserto bandeja

art. GN dim. cm.  
 58491-AD 1/2 32x26

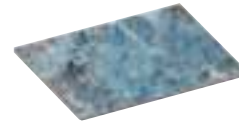
**Acacia wood.** – Legno di acacia.



**Tray insert**  
 Inserto vassoio  
 Tablett-Einsatz  
 Insert de plateau  
 Inserto bandeja

art. GN dim. cm.  
 58491-PB 1/2 32x26

**Gres - Marmoreal White.**



**Tray insert**  
 Inserto vassoio  
 Tablett-Einsatz  
 Insert de plateau  
 Inserto bandeja

art. GN dim. cm.  
 58491-PG 1/2 32x26

**Gres - Marmoreal Blue.**



**Tray insert**  
 Inserto vassoio  
 Tablett-Einsatz  
 Insert de plateau  
 Inserto bandeja

art. GN dim. cm.  
 58491-PL 1/2 32x26

**Gres - Marmoreal Green.**



SS

**Tray**  
 Vassoio  
 Tablett  
 Plateau  
 Bandeja

art.	GN	dim. cm.	h. cm.	col.
58491-04	1/1	61,8x32,8	6	●
58491Y04	1/1	61,8x32,8	6	●



**Tray insert**  
 Inserto vassoio  
 Tablett-Einsatz  
 Insert de plateau  
 Inserto bandeja

art. GN dim. cm.  
 58491-AC 1/1 52,5x32

**Acacia wood.** – Legno di acacia.



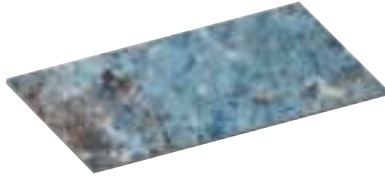


**Tray insert**

Inserto vassoio  
Tablett-Einsatz  
Insert de plateau  
Inserto bandeja

art.	GN	dim. cm.
58491-PA	1/1	52,5x32

**Gres - Marmoreal White.**



**Tray insert**

Inserto vassoio  
Tablett-Einsatz  
Insert de plateau  
Inserto bandeja

art.	GN	dim. cm.
58491-PF	1/1	52,5x32

**Gres - Marmoreal Blue.**



**Tray insert**

Inserto vassoio  
Tablett-Einsatz  
Insert de plateau  
Inserto bandeja

art.	GN	dim. cm.
58491-PK	1/1	52,5x32

**Gres - Marmoreal Green.**



SS

**Tray**

Vassoio  
Tablett  
Plateau  
Bandeja

art.	dim. cm.	h. cm.	col.
58491-03	36x25	2,9	●
58491Y03	36x25	2,9	●



SS

**Tray**

Vassoio  
Tablett  
Plateau  
Bandeja

art.	Ø cm.	col.
58026-31	31	●
58026Y31	31	●
58026-45	45	●
58026Y45	45	●



SS

**Napkin holder**

Portatovagliolo  
Serviettenhalter  
Porte-serviettes  
Servilletero

art.	dim. cm.	h. cm.	col.
58495-01	15x15	10	●
58495Y01	15x15	10	●
58495-02	19,5x19,5	10	●
58495Y02	19,5x19,5	10	●



SS

**Label holder**

Porta etichetta  
Etikettenhalter  
Porte-étiquette  
Portaetiquetas

art.	dim. cm.	h. cm.	col.
58493-09	9x3	4	●
58493Y09	9x3	4	●



SS

**Chafing dish round**

Scaldavivande tondo  
Chafing Dish, rund  
Chafing dish rond  
Chafing dish redondo

art.	Ø cm.	h. cm.	col.
58196-30	30	15	●
58196Y30	30	15	●
58196-36	36	15	●
58196Y36	36	15	●
58196-40	40	15	●
58196Y40	40	15	●

**Suitable for induction stove 58162-RA, 58162-RB.** – Adatto per piastre a induzione 58162-RA, 58162-RB.





SS

**Round stand**

Supporto rotondo  
Gestell, rund  
Support rond  
Soporte redondo

art.	Ø cm.	col.
58196-AA	30	●
58196YAA	30	●
58196-AB	36	●
58196YAB	36	●
58196-AC	40	●
58196YAC	40	●



SS

**Refrigerated Display**

Espositore Refrigerato  
Kühlregal  
Présentoir Réfrigéré  
Expositor Refrigerado

art.	GN	dim. cm.	h. cm.	col.
58499-01	1/2	34x27,3	25	●
58499Y01	1/2	34x27,3	25	●

**Equipped with 2 eutectic pads and melamine food pan GN 1/2 h 10 cm. Bowl not included. –**  
Dotazione 2 contenitori eutettici e bacinella in melamina GN 1/2 h 10 cm. Ciotola non inclusa.



SS

**Cooled showcase**

Vetrina refrigerata  
Buffet-Vitrine, Kühlbar  
Vitrine réfrigérée  
Vitrina refrigerada

art.	GN	dim. cm.	h. cm.	col.
58496-60	1/1	55,4x39	20,8	●
58496Y60	1/1	55,4x39	20,8	●

**Equipped with tray GN 1/1, 3 eutectic pads, melamine food pan GN 1/1 h 6,5 cm. –** Dotazione vassoio GN 1/1, 3 contenitori eutettici e bacinella in melamina GN 1/1 h 6,5 cm.



SS

**Cooled showcase**

Vetrina refrigerata  
Buffet-Vitrine, Kühlbar  
Vitrine réfrigérée  
Vitrina refrigerada

art.	GN	dim. cm.	h. cm.	col.
58496-24	2/4	55,4x18	20,8	●
58496Y24	2/4	55,4x18	20,8	●

**Equipped with tray GN 2/4, eutectic pads, melamine food pan GN 2/4 cm. –** Dotazione vassoio GN 2/4, contenitori eutettici e bacinella in melamina GN 2/4.



SS

**Heated showcase**

Vetrina riscaldata  
Buffet-Vitrine, Beheizt  
Vitrine chauffée  
Vitrina calefactada

art.	GN	dim. cm.	h. cm.	col.
58498-60	1/1	55,4x35	20,8	●
58498Y60	1/1	55,4x35	20,8	●

**Equipped with electric heating plate. –** Piastra elettrica in dotazione.



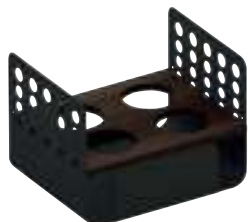
SS

**2-cereal/juice pitcher Bar**

Espositore 2 brocche bevande/cereali  
2-Getreide-/Saftkrug-Bar  
Présentoir 2 carafes à céréales/jus  
Expositor 2 jarras zumo/cereales

art.	dim. cm.	h. cm.	col.
58499-02	33,3x18,2	14,2	●
58499Y02	33,3x18,2	14,2	●

**Equipped with 2 eutectic pads and Pc food pan GN 1/3 h 6,5 cm. –** Dotazione 2 contenitori eutettici e bacinella in policarbonato GN 1/3 h 6,5 cm.



SS

**4-cereal/juice pitcher Bar**

Espositore 4 brocche bevande/cereali  
4-Getreide-/Saftkrug-Bar  
Présentoir 4 carafes à céréales/jus  
Expositor 4 jarras zumo/cereales

art.	dim. cm.	h. cm.	col.
58499-04	34x27,3	25	●
58499Y04	34x27,3	25	●

**Equipped with 2 eutectic pads and melamine food pan GN 1/2 h 10 cm. –** Dotazione 2 contenitori eutettici, bacinella in melamina GN 1/2 h 10 cm.



**Shelf for 4-pitchers bar**

Pianetto per espositore 4 brocche  
Regal Für 4-Krüge-Bar  
Étagère pour présentoir 4 carafes  
Estante para expositor 4 jarras

art.	dim. cm.
58499-AA	33,4x26,8

**Acacia wood –** Legno di acacia



**Shelf for 4-pitchers bar**

Pianetto per espositore 4 brocche  
Regal Für 4-Krüge-Bar  
Étagère pour présentoir 4 carafes  
Estante para expositor 4 jarras

art.	dim. cm.
58499YAA	33,4x26,8

**Lacquered wood –** Legno laccato



SS

**Juice dispenser**

Distributore succhi  
Saftdispenser  
Distributeur à jus  
Dispensador de zumo

art.	dim. cm.	h. cm.	lt.	col.
58373-07	33,4x20,9	52,4	7	●
58373Y07	33,4x20,9	52,4	7	●



**Juice dispenser**

Distributore succhi  
Saftdispenser  
Distributeur à jus de fruit  
Dispensador de zumo

art.	dim. cm.	h. cm.	lt.
41808-04	16x24	35	4



SS

**Coffee Dispenser**

Scaldacaffè  
Kaffeedispenser  
Rechaud à café  
Calentador de café

art.	h. cm.	lt.	col.
58371-06	54	6	●
58371Y06	54	6	●
58371-09	60	9	●
58371Y09	60	9	●
58371-12	68	12	●
58371Y12	68	12	●



**Electric heating unit**

Set alimentazione elettrica  
Follett-Heizement  
Corps de chauffe électrique  
Calentador eléctrico

art.	std	Ø cm.	V-W
58341-KE	EU	13,5	220-60
58341-KU	US	13,5	110-170







**Cake stand**

Alzata torta  
Tortenständer  
Gueridon pâtissier  
Pedestal para tartas

art.	Ø cm.	h. cm.	fits/per
68201-20	20	11	68250-16
68201-25	25	11	68250-21
68201-30	30	14	68250-26
68201-35	35	14	68250-31



**Serving stand 2-tier**

Alzata 2 piani  
Obstständer 2-stufig  
Présentoir 2 étages  
Frutero 2 niveles

art.	Ø cm.	h.
68213-02	18-26,5	25,5



**Bowl**

Ciotola  
Schüssel  
Bol

**Cuenco**

art.	Ø cm.	h.	fits/per
68210-16	16,0	10,0	-
68210-22	22,0	13,0	68210-23
68210-26	26,0	15,5	68210-23
68210-30	29,5	18,0	68210-23



**Bowl ring base**

Base per ciotole  
Schüsselsockel  
Anneau pour bol  
Base para cuenco

art.	Ø cm.	h.
68210-23	23	5



**Bread plate**

Piatto pane  
Brotteller  
Plat à pain  
Plato pan

art.	Ø cm.
68211-14	14



**Plate**

Piatto  
Teller  
Plat  
Plato

art.	dim. cm.
68211-18	18x18x2
68211-36	26,5x26,5x2



**Bowl**

Ciotola  
Schüssel  
Bol  
Cuenco

art.	Ø cm.	h.
68211-20	20	4



**Bowl**

Ciotola  
Schüssel  
Bol  
Cuenco

art.	Ø cm.	h.
68211-33	33	12



**Serving spoon**

Cucciaio servire  
Servierlöffel  
Cuillère de service

art.	l. cm.	des.
68212-01	27	plain
68212-02	27	slotted



**Buffet frame**

Supporto buffet  
Buffetgestell  
Présentoir à buffet  
Estructura buffet

art.	dim. cm.	h.
68205-26	35x29	16,0
68205-32	53x35	45,0
68205-53	35x29	26,5

**Black frame, acacia shelf.** – Struttura nera, ripiano acacia.







**Buffet stand**  
Alzata buffet  
Buffetgestell  
Présentoir à buffet  
Soporte buffet

art.	Ø cm.	h.
68203-24	24	18



**Buffet stand**  
Alzata buffet  
Buffetgestell  
Présentoir à buffet  
Soporte buffet

art.	Ø cm.	h.
68203-30	30	30



**Buffet stand**  
Alzata buffet  
Buffetgestell  
Présentoir à buffet  
Soporte buffet

art.	Ø cm.	h.
68203-36	36	6



**Buffet stand**  
Alzata buffet  
Buffetgestell  
Présentoir à buffet  
Soporte buffet

art.	Ø cm.	h.
68202-19	19	8
68202-24	24	18
68203-30	30	30
68202-36	36	6



**Buffet stand**  
Alzata buffet  
Buffetgestell  
Présentoir à buffet  
Soporte buffet

art.	Ø cm.	h.
68202-28	27,5	5



**Cutlery rest**  
Poggiaposate  
Besteckablage  
Repose couverts  
Reposa cubiertos

art.	dim. cm.
68214-11	11x8



**Buffet stand**

Supporto buffet  
Buffetgestell  
Présentoir à buffet  
Soporte buffet

art.	Ø cm.	h.
68206-12	25	12
68206-20	25	20
68206-30	25	30

Oxidized steel. – Acciaio ossidato.



**Lid & tray**

Coperchio & vassoio  
Deckel & Tablett  
Couvercle & plateau  
Tapa & bandeja

art.	Ø cm.	h.	fits/per
68207-12	35	3	68206-12
68207-20	40	3	68206-20
68207-30	45	3	68206-30



PC

**Dome cover**

Campana  
Haube  
Cloche  
Campana

art.	dim. cm.	fits/per
41414-31	30x22	68207-12
41414-36	36x27	68207-20



**Cutting board**

Tagliere  
Schneidebrett  
Planche à découper  
Tabla de corte

art.	Ø cm.	h.	fits/per
68221-34	34	5	41414-31



**Dome cover, glass**

Campana vetro  
Haube, Glas  
Cloche en verre  
Campana vidrio

art.	Ø cm.	fits/per
68275-17	16,8	68201-20
68275-22	21,8	68201-25
68275-26	26,0	68201-30
68275-32	31,7	68201-35



**Buffet stand**

Alzata buffet  
Buffetgestell  
Présentoir à buffet  
Soporte buffet

art.	dim. cm.	h. cm.
68219-61	60x20	8
68219-62	60x20	14
68219-81	80x20	8
68219-82	80x20	14

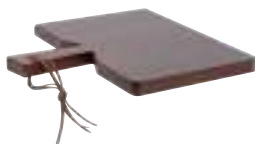


**Cutting board**

Tagliere  
Schneidebrett  
Planche à découper  
Tabla de corte

art.	dim. cm.
68219-35	35x25x2
68219-45	45x25x2





**Cutting board**

Tagliere  
Schneidebrett  
Planche à découper  
Tabla de corte

art. dim. cm.  
68219-30 30x30x2



**Cutting board**

Tagliere  
Schneidebrett  
Planche à découper  
Tabla de corte

art. dim. cm.  
68219-60 60x20x2  
68219-80 80x20x2  
68219-99 120x20x2



**Cutting board, set 4 pieces**

Set 4 taglieri  
Satz 4 Schneidebretts  
Set 4 Planches  
Juego 4 Tablas de corte

art. dim. cm.  
68220-90 90x19,5x2



**Cutting board**

Tagliere  
Schneidebrett  
Planche à découper  
Tabla de corte

art. dim. cm.  
68222-32 32x32x5



**Container**

Contentitore  
Behälter  
Conteneur  
Contenedor

art. dim. cm. h.  
68215-01 11x11 14  
68215-02 11x11 14-8



**Container**

Contentitore  
Behälter  
Conteneur  
Contenedor

art. dim. cm.  
68216-01 26,5x12x8  
68216-02 26,5x20,5x8



**Container**

Contentitore  
Behälter  
Conteneur  
Contenedor

art. GN dim. cm.  
68216-32 1/2 32,5x26,5x9  
68216-53 1/1 53x32,5x9



**Bread cutting board**

Tagliere pane  
Brotschneidebrett  
Planche à découper  
Tabla de corte

art. GN dim. cm.  
68217-32 1/2 32,5x26,5x5,5  
68217-53 1/1 53x32,5x5,5



**Dome cover rest**  
Supporto cloche  
Haubenhalterung  
Support à cloche  
Soporte para cloche

art.	dim. cm.
68218-14	14x14x9,5



PC

**Roll top cover**  
Coperchio roll top  
Rolltophaube  
Couvercle roll top  
Tapa roll top

art.	GN	dim. cm.
42452-53	1/1	53x32,5x17



SAN

**Cover**  
Coperchio  
Haube  
Couvercle  
Tapa

art.	GN	dim. cm.
41418-11	1/1	54x22x20
41419-12	1/2	33x28x17

Front cut. – Apertura frontale.



PC

**Cloche**  
Cloche  
Haube  
Cloche  
Cloche

art.	Ø cm.	h.	fits/per
68250-16	15,7	14,7	68201-20
68250-21	20,7	18,0	68201-25
68250-26	25,7	24,4	68201-30
68250-31	31,0	32,0	68201-35







**Stand**

Alzata  
Gestell  
Présentoir à buffet  
Soporte buffet

art.	Ø cm.	h.
68230-18	18	3
68230-24	24	3
68230-32	32	3



**Cloche**

Cloche  
Haube  
Cloche  
Cloche

art.	Ø cm.	h.
68231-18	17	10
68231-24	23	14
68231-32	31	16



**Bowl**

Ciotola  
Schüssel  
Bol  
Cuenco

art.	Ø cm.	h.
68232-26	26	16
68232-30	30	18

**With cotton linen. – Con fodera cotone.**



**Bowl**

Ciotola  
Schüssel  
Bol  
Cuenco

art.	Ø cm.	h.
68208-43	43	32
68208-53	53	40



**Bowl**

Ciotola  
Schüssel  
Bol  
Cuenco

art.	Ø cm.	h.
68208-51	51	12



**Lid**

Coperchio  
Deckel  
Couvercle  
Tapa

art.	Ø cm.	h.	fits/per
68209-43	40	1,5	68208-43
68209-51	45	1,5	68208-51
68209-53	50	1,5	68208-53

**Acacia.**



**Container**

Contentitore  
Behälter  
Conteneur  
Contenedor

art.	Ø cm.	h.
68233-01	11x11	14
68233-02	11x11	14-8



**Container**

Contentitore  
Behälter  
Conteneur  
Contenedor

art.	dim. cm.
68233-03	27x12x8
68233-04	27x21x8



**Container**

Contentitore  
Behälter  
Conteneur  
Contenedor

art.	GN	dim. cm.
68233-05	1/2	32,5x26,5x8
68233-06	1/1	53x32,5x8



**Tray**

Vassoio  
Tablett  
Plateau  
Bandeja

art.	GN	dim. cm.
68233-07	1/2	32,5x26,5x4
68233-08	1/1	53x32,5x4



**Juice pitcher, glass**

Caraffa vetro  
Saftkanne, Glas  
Carafe à jus, verre  
Jarra zumo, vidrio

art.	Ø cm.	lt.
68270-15	10	1,5

**Stainless steel lid. – Coperchio inox.**



**Juice dispenser**

Distributore succhi  
Saftdispenser  
Distributeur à jus de fruit  
Dispensador de zumo

art.	dim. cm.	lt.
41808-04	16x24x35	4



## location

**FONDAZIONE MINOPRIO**  
Viale Raimondi, 54  
Vertemate con Minoprio, CO  
[fondazioneminoprio.it](http://fondazioneminoprio.it)

## photo

Claudio Tajoli

# sambonet®

## Arthur Krupp

**SAMBONET  
PADERNO  
INDUSTRIE  
S. P. A.**

Via G. Coppo, 1C  
28060 Orfengo (NO) - Italy

Ph. +39 0321 1916 601  
Fax +39 0321 1916 890

[horeca@sambonet.it](mailto:horeca@sambonet.it)

[sambonet.com](http://sambonet.com)

**ROSENTHAL  
SAMBONET  
USA LDT.**

685 Route 10  
Randolph NJ 07869 - USA

Ph. +1 201 804 8000  
Fax +1 201 842 9195

[info@rosenthalusa-shop.com](mailto:info@rosenthalusa-shop.com)

[rosenthal-hotel-restaurant.com](http://rosenthal-hotel-restaurant.com)



ARCTURUS GROUP

XA1101 - 10/2023

### ©COPYRIGHT

**This catalogue may not be reproduced in whole or in part without specific prior written authorization by Sambonet Paderno Industrie S.p.A.**

Ogni riproduzione anche parziale del presente catalogo è vietata se non espressamente autorizzata per iscritto da Sambonet Paderno Industrie S.p.A.

### NOTES

**Dimensions, features and pictures of the products are representative. We reserve the right to alter at any time the specifications stated without notice, whenever technical requirements shall so require.**

Misure, caratteristiche e illustrazioni dei prodotti sono indicative e soggette a variazioni senza preavviso qualora esigenze tecnico-produttive lo richiedessero.





**sambonet**<sup>®</sup>

Arthur Krupp

XA1101 © 10/2023

